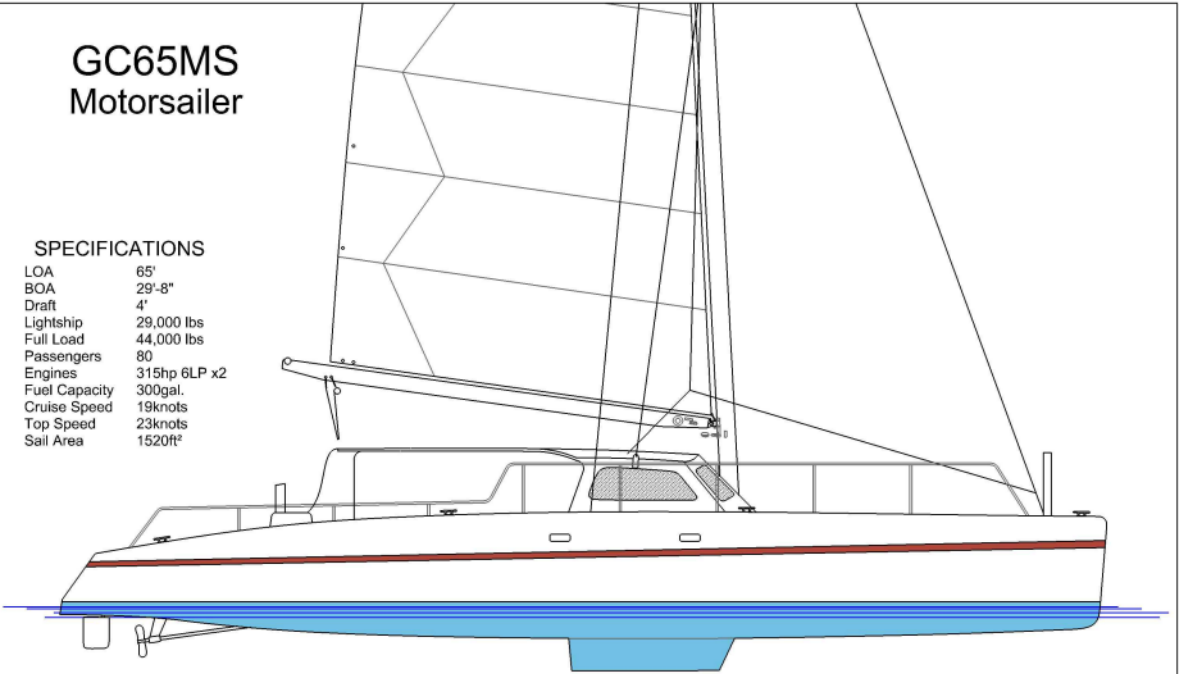


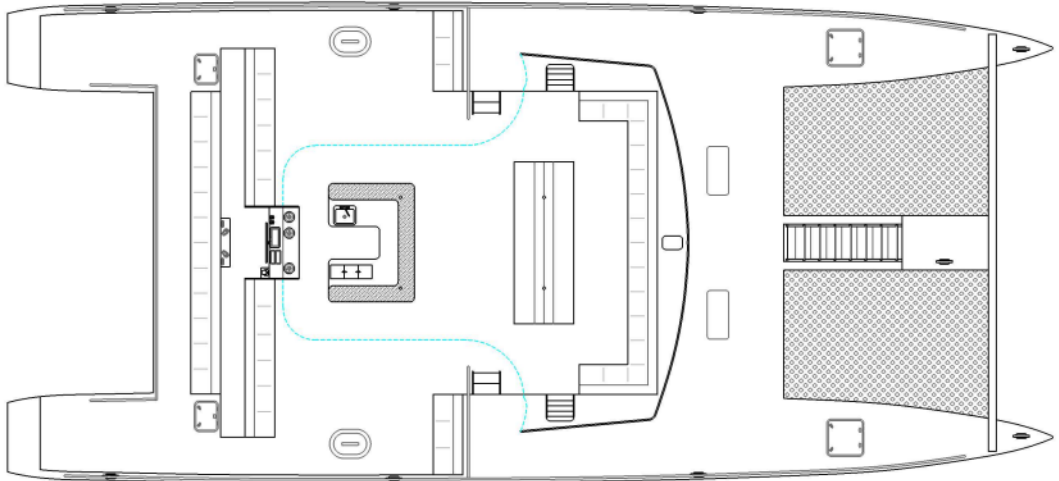
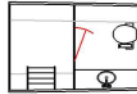
# GC65MS Motorsailer

## SPECIFICATIONS

LOA	65'
BOA	29'-8"
Draft	4'
Lightship	29,000 lbs
Full Load	44,000 lbs
Passengers	80
Engines	315hp 6LP x2
Fuel Capacity	300gal.
Cruise Speed	19knots
Top Speed	23knots
Sail Area	1520ft <sup>2</sup>



Hull Plan



Hull Plan