

## Chamonix II GC70 DAY CHARTER CATAMARAN



### SPECIFICATIONS

LOA	70'
BOA	31'
Draft	3' 6" – 7'6"
Light Displacement	40,000 lbs
Heavy Displacement	60,000 lbs
Passengers	00
Engines	2 x 240 hp
Fuel Capacity	2 x 150
Cruise Speed	14 knots
Full Speed	17 knots
Sail Area	1,560 sq. ft.
Bruce #	0.9

## **HULLS AND DECKS**

### ***Construction:***

- Fir and cedar strip-planked hulls - Exterior triaxial glassed. Interior glassed with unidirectional glass.
- Stringer/frame/plywood/fiberglassed decks, beams, bridgedecks, cabin roof and wingfairing
- All materials marine grade, laminated, coated and/or glassed with WEST SYSTEM™ Epoxy resin systems

### ***Exterior Finish:***

- Awlgrip Polyurethane paint over epoxy primer-- commercial finish

### ***Interior Finish:***

- Gougeon WEST SYSTEM™ ' pigmented light grey coat' forward, aft and in engine rooms
- Awlgrip Mattahorn White waterbase in head and storage areas

### ***Paint and Graphics:***

- Snow White topsides, cockpit, mast
- Choice of colors for topside and mast stripe
- Choice of nonskid deck colors
- 2 - Coats of bottom paint (3 coats at waterline)
- 3" Name and hailing port on aft beam
- 8" Name on port and starboard topsides

## **DECK FITTINGS AND EQUIPMENT**

### ***Mooring Cleats:***

- 5 - 15" Stainless
- 4 - 12" Stainless

### ***Fairleads:***

- 2 - 7 3/4" Bow chocks

### ***Railings***

- Welded aluminum rails along port and starboard sheer and stern deck.
- Welded aluminum athwartship rails to bridgedeck

### ***Deck Hatches:***

- 2 - Lewmar size 70 hatches
- 2 - Fiberglass companionway hatches
- 4 - Flush Starboard wingdeck hatches
- 2 - Engine access hatches
- 4 - Tempres utility hatches

### ***Controls:***

- 5- part mainsheet, 2- part internal main halyard
- Sliding jib sheet car on 6" T tracks

- External jib & and spinnaker halyards
- Internal outhaul and slab reefing on boom
- Double purchase mast rotation lead to steering station
- Daggerboard control - float up - 2 part pull down  
Single daggerboard

### ***Winches:***

- 4 - Lewmar 50 Ocean Series
- 1 - Lewmar 48 Ocean Series
- 1 - Lewmar 44 Ocean Series
- 2 - 10" Double grip locking winch handle
- 1 - 10" Single grip locking winch handles

### ***Blocks and Turning Blocks:***

- Lewmar stoppers, deck organizers and blocks as required

### ***Steering:***

- 32" Edson Destroyer wheel, Kobelt hydraulic pump to Edson tiller arm via 1/2" copper tubing. Series hydraulic system.

### ***Spars:***

- 78' GCY rotating wing spar 3/4 rig with diamonds and rotator
- Antal track and cars for luff
- S.S/ Teflon mast rotation base
- Charleston boom with Lewmar outhaul car and provisions for three reefs and 2-part lazyjacks

### ***Rigging:***

- *Standing* - All standing rigging is Norseman Dyform
- SS wire terminating with Norseman fittings, turnbuckles and toggles to SS chainplates
- *Running* - All running rigging is GWB Halyard Braid

### ***Sails:***

- Full batten, large roach loose-footed main with three reefs, aqua battens and sailcover
- Working jib with bag

## **GROUND AND MOORING TACKLE**

- 1 - 44# BRUCE, 15'- 3/8" chain and 200' 3/4" rode
- 1 - FX-55 Fortress, 15'- 3/8" chain and 200' 3/4" rode
- 4 - 50' 3/4" dock lines
- 6 - Scanmarin Fenders 10" x 25"

- 1 - Bow Anchor Roller

## **ELECTRICAL**

- 1 - Clarion am/fm/cassette stereo w/ 10 disc CD and 6 speakers
- 1 - Standard Horizon VHF/PA with antenna and 2 PA horns
- 1 - 4" Danforth Compass
- Radar – See USCG list
- 1 - Lightning rod
- 3 – Dynaplate grounding plates
- 1 - Paneltronics 12-Volt DC/110V AC electrical panel with voltmeter
- 2 – Heart Freedom 30 Inverters/chargers, 4 – 8D AGM house bank batteries with amp monitor and charge controllers.
- 50' 30 Amp shore power cord and inlet
- Cross charging/starting battery switch system
- 1 - Port and starboard bow light, sternlight, steaming and anchor lights
- 8 - Interior fluorescent light fixtures
- 6 - Dome lights
- 5 - 110V outlets
- 1 - 12V receptacle

## **PLUMBING**

### ***Piping:***

- All water supply hosing is rigid PVC
- 1 - Henderson MKV Emergency Bilge Pump

### ***Water Systems:***

- 2 - 55 Gal. Tank w/deck fills , Jabsco pressure pumps and accumulators
- 3 – Sinks with cold water spigots
- Head compartment sump

### ***Heads:***

- 2 - Raritan Atlantis electric macerator toilets, aluminum holding tank. Marelon thru-hull and seaocks

## **SAFETY/EQUIPMENT**

- 2 – Sunrise Yachts forward nets
- 1 - Aluminum Stairway to the Sea
- 2 – Aluminum bridgedeck stairs
- 1 – Aluminum stern swim ladder
- 6 - watertight bulkheads
- Double bottom integrity
- See USCG Schedule A for additional equipment

## **ACCOMMODATIONS**

- Heads with sinks and sump in port cabin
- 4 - Beckson ports
- Starboard cabin storage with 8 shelves
- U shaped bar with icebox, storage and sink
- 12' x 24' protective roof
- Stern deck seat lockers for wet storage

## **170 HP YANMAR ENGINE**

2- Yanmar 4LH-DTE marine diesels set for 170 hp at 3300 rpm with 2:1 Hurth gear. MorseSL-3 controls and cables, Yanmar instrument panel, with oil pressure, water temp, and engine hour meters, safety alarm, tachometers, 55 amp alternator, (2) 100 gal aluminum fuel tanks with elec fuel guage senders, Vernalift wet exhaust, Yanmar flexible engine mounts, bronze strut, 1.50" SS shaft, fixed 3 blade Bronze prop, 2- Optima (1000 CCA) starting batteries, engine room lights, 12V electric bilge pumps, hinged engine access/replacement deck hatch, . Storage shelf in each engine room.

## **USCG CERTIFICATION**

Plans approval, documentation, USCG Certification (105 passengers, 3 crew )with follow-up stability letter including consultation with your local OCMI to expedite final certificate, FCC Station Inspection and Safety Certificate. See attached USCG Schedule A for additional construction and equipment

## **ASKING PRICE**

\$1.1 M

Photos below. For more photos, visit: [www.bigdcats.com](http://www.bigdcats.com)

# GOLD COAST YACHTS®

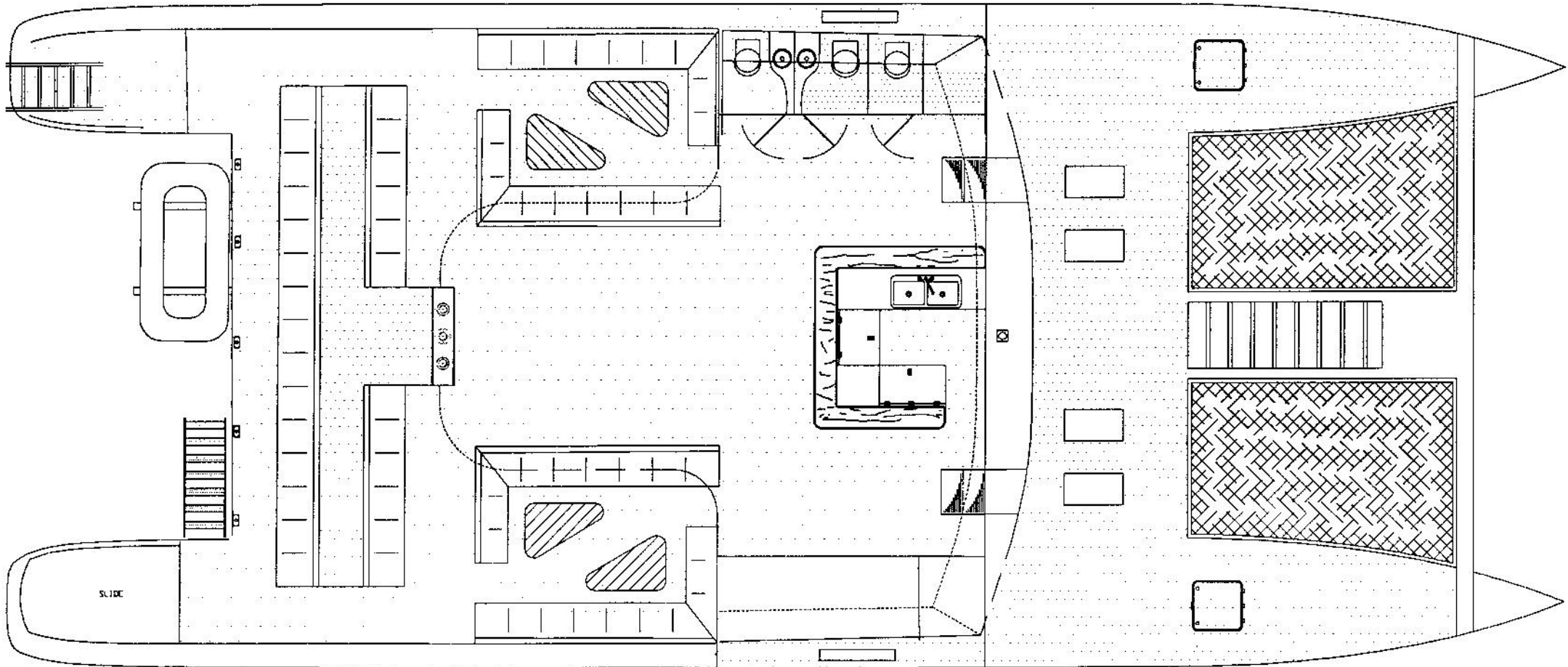
ST CROIX, U.S. VIRGIN ISLANDS



# GOLD COAST YACHTS®

ST CROIX, U.S. VIRGIN ISLANDS





SCALE; 3/16":1'

PLAN VIEW

GC 70 #71  
SAILING TEXANS

GOLD COAST YACHTS  
PO Box 1980 Kingshill  
St Croix, USVI 00851  
Phone: 340 778-1004  
Fax: 340 778-2859